

COL1A1 Antibody



PACO62863

Product Information

Size:

50ul

Reactivity:

Human

Source:

Rabbit

Isotype:

IgG

Applications:

ELISA, IF

Recommended dilutions:

ELISA:1:2000-1:10000, IF:1:50-1:200

Protein Background:

Type I collagen is a member of group I collagen (fibrillar forming collagen).

Gene ID:

COL1A1

Uniprot

P02452

Synonyms:

Collagen alpha-1(I) chain (Alpha-1 type I collagen), COL1A1

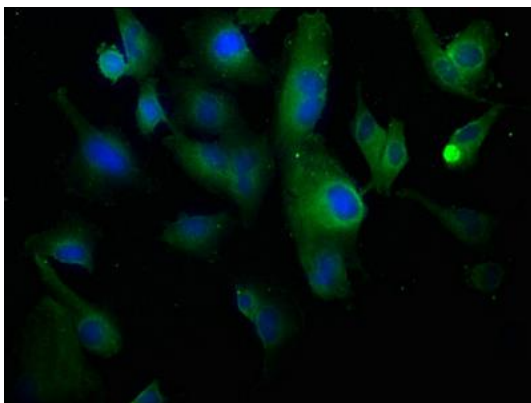
Immunogen:

Peptide sequence from Human Collagen alpha-1(I) chain protein (1306-1323AA).

Storage:

Preservative: 0.03% Proclin 300. Constituents: 50% Glycerol, 0.01M PBS, pH 7.4

Product Images



Immunofluorescence staining of U251 cells with PACO62863 at 1:100, counter-stained with DAPI. The cells were fixed in 4% formaldehyde, permeabilized using 0.2% Triton X-100 and blocked in 10% normal Goat Serum. The cells were then incubated with the antibody overnight at 4°C. The secondary antibody was Alexa Fluor 488-conjugated AffiniPure Goat Anti-Rabbit IgG(H+L).