

Product Information

Size:

50ul

Reactivity:

Human

Source:

Rabbit

Isotype:

IgG

Applications:

ELISA, IHC

Recommended dilutions:

ELISA:1:2000-1:10000, IHC:1:200-1:500

Protein Background:

As a component of the GATOR subcomplex GATOR2, functions within the amino acid, sensing branch of the TORC1 signaling pathway. Indirectly activates mTORC1 and the TORC1 signaling pathway through the inhibition of the GATOR1 subcomplex. It is negatively regulated by the upstream amino acid, sensors SESN2 and CASTOR1. In addition to its role in regulation of the TORC1 complex, promotes the acid, fication of lysosomes and facilitates autophagic flux.

Gene ID:

WDR24

Uniprot

Q96S15

Synonyms:

GATOR complex protein WDR24 (WD repeat-containing protein 24), WDR24, C16orf21

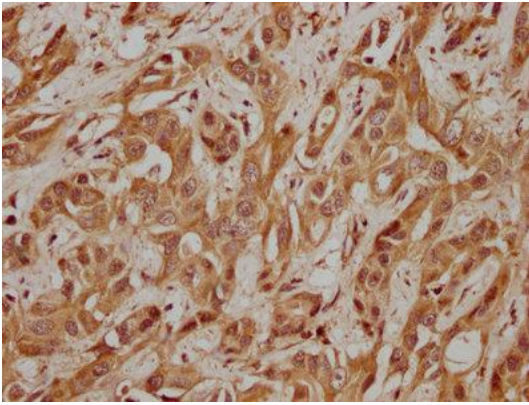
Immunogen:

Recombinant Human GATOR complex protein WDR24 protein (1-298AA).

Storage:

Preservative: 0.03% Proclin 300. Constituents: 50% Glycerol, 0.01M PBS, pH 7.4

Product Images



IHC image of PACO62775 diluted at 1:200 and staining in paraffin-embedded human ovarian tissue performed on a Leica Bond™ system. After dewaxing and hydration, antigen retrieval was mediated by high pressure in a citrate buffer (pH 6.0). Section was blocked with 10% normal goat serum 30min at RT. Then primary antibody (1% BSA) was incubated at 4°C overnight. The primary is detected by a biotinylated secondary antibody and visualized using an HRP conjugated SP system.