

PDE1A Antibody



PACO62731

Product Information

Size:

50ul

Reactivity:

Human

Source:

Rabbit

Isotype:

IgG

Applications:

ELISA, IF

Recommended dilutions:

ELISA:1:2000-1:10000, IF:1:50-1:200

Protein Background:

Cyclic nucleotide phosphodiesterase with a dual-specificity for the second messengers cAMP and cGMP, which are key regulators of many important physiological processes. Has a higher affinity for cGMP than for cAMP.

Gene ID:

PDE1A

Uniprot

P54750

Synonyms:

Calcium/calmodulin-dependent 3',5'-cyclic nucleotide phosphodiesterase 1A (Cam-PDE 1A) (EC 3.1.4.17) (61 kDa Cam-PDE) (hCam-1), PDE1A

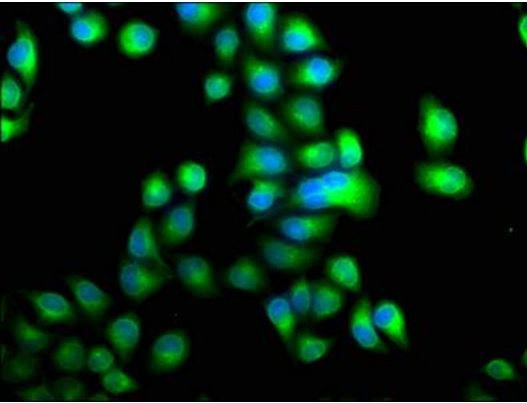
Immunogen:

Recombinant Human Calcium/calmodulin-dependent 3',5'-cyclic nucleotide phosphodiesterase 1A protein (1-219AA).

Storage:

Preservative: 0.03% Proclin 300. Constituents: 50% Glycerol, 0.01M PBS, pH 7.4

Product Images



Immunofluorescence staining of HeLa cells with PACO62731 at 1:100, counter-stained with DAPI. The cells were fixed in 4% formaldehyde, permeabilized using 0.2% Triton X-100 and blocked in 10% normal Goat Serum. The cells were then incubated with the antibody overnight at 4°C. The secondary antibody was Alexa Fluor 488-conjugated AffiniPure Goat Anti-Rabbit IgG(H+L).