

TMEM214 Antibody



PACO62719

Product Information

Size:

50ul

Reactivity:

Human

Source:

Rabbit

Isotype:

IgG

Applications:

ELISA, WB, IP

Recommended dilutions:

ELISA:1:2000-1:10000, WB:1:1000-1:5000,
IP:1:200-1:2000

Protein Background:

Critical mediator, in cooperation with CASP4, of endoplasmic reticulum-stress induced apoptosis. Required for the activation of CASP4 following endoplasmic reticulum stress.

Gene ID:

TMEM214

Uniprot

Q6NUQ4

Synonyms:

Transmembrane protein 214, TMEM214

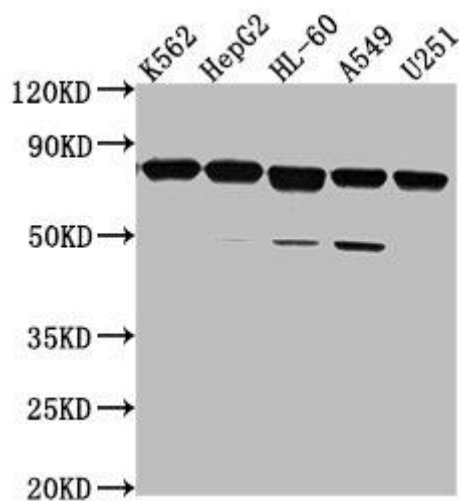
Immunogen:

Recombinant Human Transmembrane protein 214 protein (2-236AA).

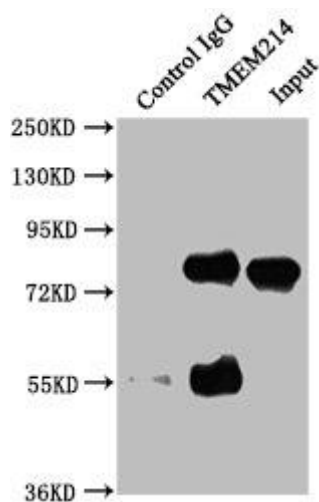
Storage:

Preservative: 0.03% Proclin 300. Constituents: 50% Glycerol, 0.01M PBS, pH 7.4

Product Images



Western Blot. Positive WB detected in: K562 whole cell lysate, HepG2 whole cell lysate, HL-60 whole cell lysate, A549 whole cell lysate, U251 whole cell lysate. All lanes: TMEM214 antibody at 1:2000. Secondary. Goat polyclonal to rabbit IgG at 1/50000 dilution. Predicted band size: 78, 73 kDa. Observed band size: 78 kDa.



Immunoprecipitating TMEM214 in HepG2 whole cell lysate. Lane 1: Rabbit control IgG instead of PACO62719 in HepG2 whole cell lysate. For western blotting, a HRP-conjugated Protein G antibody was used as the secondary antibody (1/50000). Lane 2: PACO62719 (5 μ g) + HepG2 whole cell lysate (0.5mg). Lane 3: HepG2 whole cell lysate (20 μ g).