

# ompC Antibody



PACO62575

---

## Product Information

**Size:**

50ul

**Reactivity:**

Escherichia coli O157: H7

**Source:**

Rabbit

**Isotype:**

IgG

**Applications:**

ELISA, WB

**Recommended dilutions:**

ELISA:1:2000-1:10000, WB:1:1000-1:5000

**Protein Background:**

Forms pores that allow passive diffusion of small molecules across the outer membrane.

**Gene ID:**

ompC

**Uniprot**

Q8XE41

**Synonyms:**

Outer membrane protein C (Outer membrane protein 1B) (Porin OmpC), ompC

**Immunogen:**

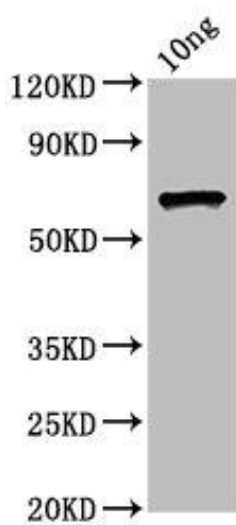
Recombinant Escherichia coli O157: H7 Outer membrane protein C protein (22-367AA).

**Storage:**

Preservative: 0.03% Proclin 300. Constituents: 50% Glycerol, 0.01M PBS, pH 7.4

## Product Images

---



Western Blot. Positive WB detected in Recombinant protein. All lanes: ompC antibody at 4.5 $\mu$ g/ml. Secondary. Goat polyclonal to rabbit IgG at 1/50000 dilution. Predicted band size: 60 kDa. Observed band size: 60 kDa.