

HUS1B Antibody



PACO62559

Product Information

Size:

50ul

Reactivity:

Human

Source:

Rabbit

Isotype:

IgG

Applications:

ELISA, IHC

Recommended dilutions:

ELISA:1:2000-1:10000, IHC:1:200-1:500

Protein Background:

checkpoint clamp complex, site of double-strand break, double-strand break repair via homologous recombination, intra-S DNA damage checkpoint, meiotic DNA integrity checkpoint, mitotic DNA replication checkpoint, nucleotide-excision repair.

Gene ID:

HUS1B

Uniprot

Q8NHY5

Synonyms:

Checkpoint protein HUS1B (hHUS1B), HUS1B

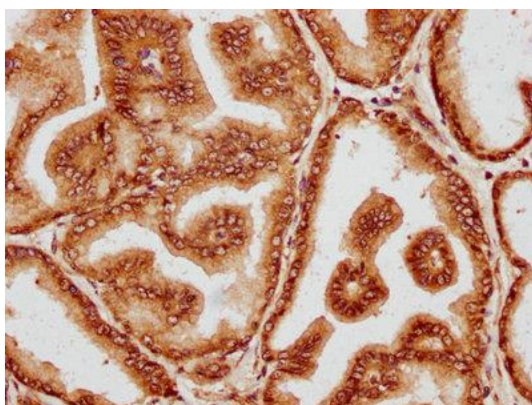
Immunogen:

Recombinant Human Checkpoint protein HUS1B protein (37-113AA).

Storage:

Preservative: 0.03% Proclin 300. Constituents: 50% Glycerol, 0.01M PBS, pH 7.4

Product Images



IHC image of PACO62559 diluted at 1:400 and staining in paraffin-embedded human prostate tissue performed on a Leica Bond™ system. After dewaxing and hydration, antigen retrieval was mediated by high pressure in a citrate buffer (pH 6.0). Section was blocked with 10% normal goat serum 30min at RT. Then primary antibody (1% BSA) was incubated at 4°C overnight. The primary is detected by a biotinylated secondary antibody and visualized using an HRP conjugated SP system.