

PACO62479

Product Information

Size:

50ul

Reactivity:

Human

Source:

Rabbit

Isotype:

IgG

Applications:

ELISA, WB

Recommended dilutions:

ELISA:1:2000-1:10000, WB:1:1000-1:5000

Protein Background:

Nuclear GTPase found in germinal center B-cells, where it may inhibit function of the activation-induced cytidine deaminase AICDA. Reduces somatic hypermutation in B-cells which may enhance genome stability.

Gene ID:

NUGGC

Uniprot

Q68CJ6

Synonyms:

Nuclear GTPase SLIP-GC (EC 3.6.1) (Speckled-like pattern in the germinal center), NUGGC, C8orf80

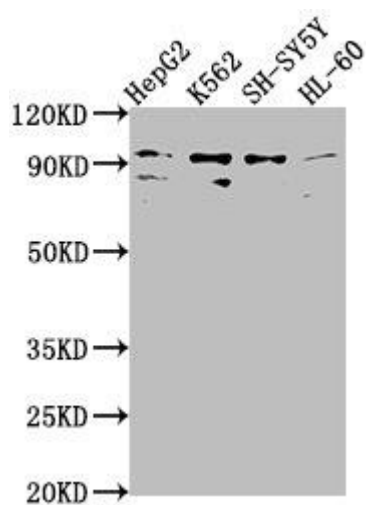
Immunogen:

Recombinant Human Nuclear GTPase SLIP-GC protein (1-228AA).

Storage:

Preservative: 0.03% Proclin 300. Constituents: 50% Glycerol, 0.01M PBS, pH 7.4

Product Images



Western Blot. Positive WB detected in: HepG2 whole cell lysate, K562 whole cell lysate, SH-SY5Y whole cell lysate, HL-60 whole cell lysate. All lanes: NUGGC antibody at 1:2000. Secondary. Goat polyclonal to rabbit IgG at 1/50000 dilution. Predicted band size: 92 kDa. Observed band size: 92 kDa.