

COL9A2 Antibody



PACO62459

Product Information

Size:

50ul

Reactivity:

Human, Rat

Source:

Rabbit

Isotype:

IgG

Applications:

ELISA, WB

Recommended dilutions:

ELISA:1:2000-1:10000, WB:1:1000-1:5000

Protein Background:

Structural component of hyaline cartilage and vitreous of the eye.

Gene ID:

COL9A2

Uniprot

Q14055

Synonyms:

Collagen alpha-2(IX) chain, COL9A2

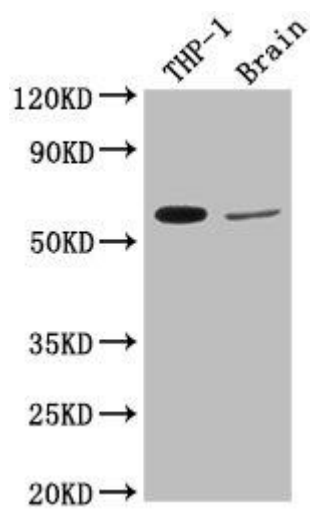
Immunogen:

Peptide sequence from Human Collagen alpha-2(IX) chain protein (594-611AA).

Storage:

Preservative: 0.03% Proclin 300. Constituents: 50% Glycerol, 0.01M PBS, pH 7.4

Product Images



Western Blot. Positive WB detected in: THP-1 whole cell lysate, Rat brain tissue. All lanes: COL9A2 antibody at 1:2000. Secondary. Goat polyclonal to rabbit IgG at 1/50000 dilution. Predicted band size: 66 kDa. Observed band size: 66 kDa.