

RABEP1 Antibody



PACO62455

Product Information

Size:

50ul

Reactivity:

Human

Source:

Rabbit

Isotype:

IgG

Applications:

ELISA, WB, IHC

Recommended dilutions:

ELISA:1:2000-1:10000, WB:1:1000-1:5000,
IHC:1:200-1:500

Protein Background:

Rab effector protein acting as linker between gamma-adaptin, RAB4A and RAB5A. Involved in endocytic membrane fusion and membrane trafficking of recycling endosomes. Involved in KCNH1 channels trafficking to and from the cell membrane. Stimulates RABGEF1 mediated nucleotide exchange on RAB5A.

Gene ID:

RABEP1

Uniprot

Q15276

Synonyms:

Rab GTPase-binding effector protein 1 (Rabaptin-4) (Rabaptin-5) (Rabaptin-5alpha) (Renal carcinoma antigen NY-REN-17), RABEP1, RAB5EP RABPT5 RABPT5A

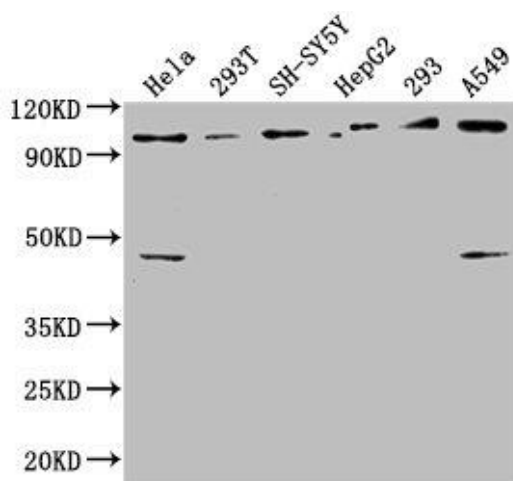
Immunogen:

Recombinant Human Rab GTPase-binding effector protein 1 protein (1-255AA).

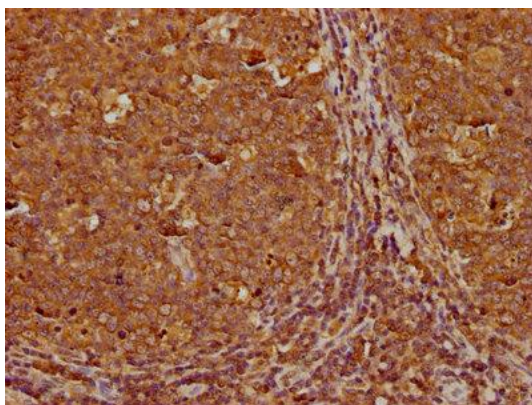
Storage:

Preservative: 0.03% Proclin 300. Constituents: 50% Glycerol, 0.01M PBS, pH 7.4

Product Images



Western Blot. Positive WB detected in: HeLa whole cell lysate, 293T whole cell lysate, SH-SY5Y whole cell lysate, HepG2 whole cell lysate, 293 whole cell lysate, A549 whole cell lysate. All lanes: RABEP1 antibody at 1:2500. Secondary. Goat polyclonal to rabbit IgG at 1/50000 dilution. Predicted band size: 100, 96 kDa. Observed band size: 100 kDa.



IHC image of PACO62455 diluted at 1:300 and staining in paraffin-embedded human tonsil tissue performed on a Leica Bond™ system. After dewaxing and hydration, antigen retrieval was mediated by high pressure in a citrate buffer (pH 6.0). Section was blocked with 10% normal goat serum 30min at RT. Then primary antibody (1% BSA) was incubated at 4°C overnight. The primary is detected by a biotinylated secondary antibody and visualized using an HRP conjugated SP system.