

PACO62447

Product Information

Size:

50ul

Reactivity:

Human

Source:

Rabbit

Isotype:

IgG

Applications:

ELISA, WB, IF

Recommended dilutions:

ELISA:1:2000-1:10000, WB:1:100-1:1000,
IF:1:20-1:200

Protein Background:

This magnesium-dependent enzyme catalyzes the hydrolysis of ATP coupled with the transport of calcium out of the cell.

Gene ID:

ATP2B3

Uniprot

Q16720

Synonyms:

Plasma membrane calcium-transporting ATPase 3 (PMCA3) (EC 3.6.3.8) (Plasma membrane calcium ATPase isoform 3) (Plasma membrane calcium pump isoform 3), ATP2B3

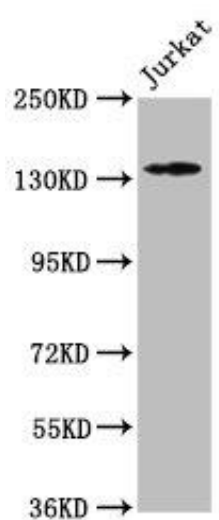
Immunogen:

Recombinant Human Plasma membrane calcium-transporting ATPase 3 protein (1057-1220AA).

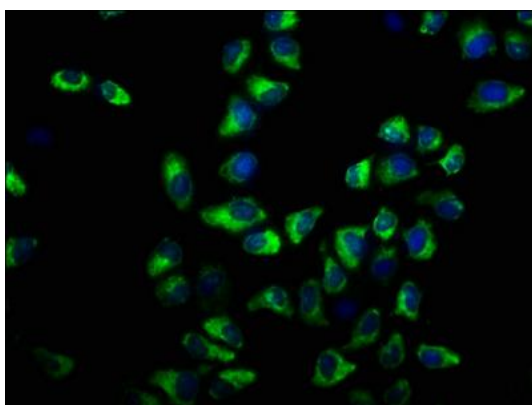
Storage:

Preservative: 0.03% Proclin 300. Constituents: 50% Glycerol, 0.01M PBS, pH 7.4

Product Images



Western Blot. Positive WB detected in: Jurkat whole cell lysate. All lanes: ATP2B3 antibody at 1:500. Secondary: Goat polyclonal to rabbit IgG at 1/50000 dilution. Predicted band size: 135, 129, 128, 133, 127, 125, 123 kDa. Observed band size: 135 kDa.



Immunofluorescence staining of HeLa cells with PACO62447 at 1:33, counter-stained with DAPI. The cells were fixed in 4% formaldehyde, permeabilized using 0.2% Triton X-100 and blocked in 10% normal Goat Serum. The cells were then incubated with the antibody overnight at 4°C. The secondary antibody was Alexa Fluor 488-conjugated AffiniPure Goat Anti-Rabbit IgG(H+L).