

PACO62431

Product Information

Size:

50ul

Reactivity:

Escherichia coli

Source:

Rabbit

Isotype:

IgG

Applications:

ELISA, WB

Recommended dilutions:

ELISA:1:2000-1:10000, WB:1:1000-1:5000

Protein Background:

Involved in the biosynthesis of alanine.

Gene ID:

alaA

Uniprot

P0A959

Synonyms:

Glutamate-pyruvate aminotransferase AlaA (EC 2.6.1.2), alaA, yfbQ

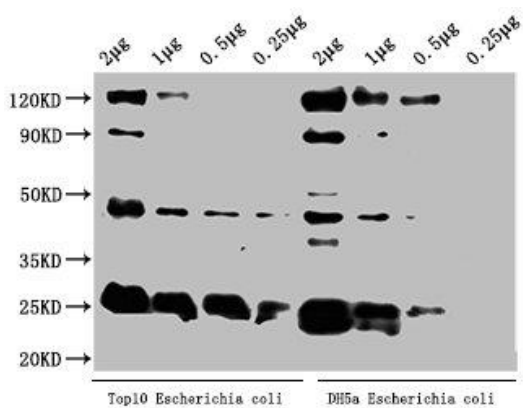
Immunogen:

Recombinant Escherichia coli Glutamate-pyruvate aminotransferase AlaA protein (1-405AA).

Storage:

Preservative: 0.03% Proclin 300. Constituents: 50% Glycerol, 0.01M PBS, pH 7.4

Product Images



Western Blot. Positive WB detected in: Top10 Escherichia coli lysate, DH5alpha Escherichia coli lysate. All lanes: alaA antibody at 1:2000. Secondary. Goat polyclonal to rabbit IgG at 1/50000 dilution. Predicted band size: 46 kDa. Observed band size: 46 kDa.