

SKOR1 Antibody



PACO62419

Product Information

Size:

50ul

Reactivity:

Human

Source:

Rabbit

Isotype:

IgG

Applications:

ELISA, IHC

Recommended dilutions:

ELISA:1:2000-1:10000, IHC:1:200-1:500

Protein Background:

Acts as a transcriptional corepressor of LBX1. Inhibits BMP signaling.

Gene ID:

SKOR1

Uniprot

P84550

Synonyms:

SKI family transcriptional corepressor 1 (Functional Smad-suppressing element on chromosome 15) (Fussel-15) (LBX1 corepressor 1) (Ladybird homeobox corepressor 1), SKOR1, CORL1 FUSSEL15 LBXCOR1

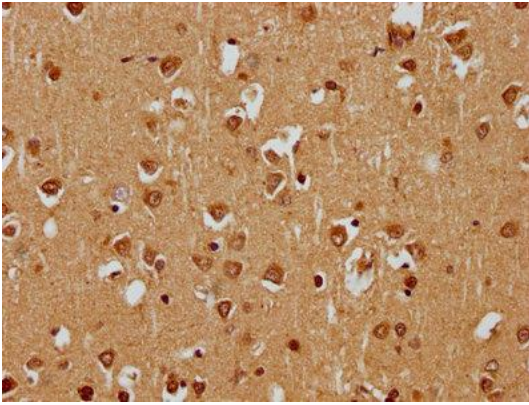
Immunogen:

Recombinant Human SKI family transcriptional corepressor 1 protein (744-965AA).

Storage:

Preservative: 0.03% Proclin 300. Constituents: 50% Glycerol, 0.01M PBS, pH 7.4

Product Images



IHC image of PACO62419 diluted at 1:400 and staining in paraffin-embedded human brain tissue performed on a Leica Bond™ system. After dewaxing and hydration, antigen retrieval was mediated by high pressure in a citrate buffer (pH 6.0). Section was blocked with 10% normal goat serum 30min at RT. Then primary antibody (1% BSA) was incubated at 4°C overnight. The primary is detected by a biotinylated secondary antibody and visualized using an HRP conjugated SP system.