

PACO62367

Product Information

Size:

50ul

Reactivity:

Human

Source:

Rabbit

Isotype:

IgG

Applications:

ELISA, WB

Recommended dilutions:

ELISA:1:2000-1:10000, WB:1:500-1:2000

Protein Background:

Involved in the genetic cascade that governs left-right specification. Plays a role in the maintenance of a normal ciliary structure. Required for correct asymmetric expression of NODAL, LEFTY and PITX2.

Gene ID:

RTTN

Uniprot

Q86VV8

Synonyms:

Rotatin, RTTN

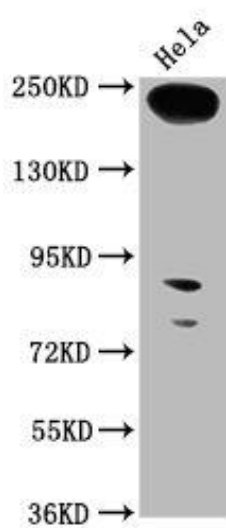
Immunogen:

Recombinant Human Rotatin protein (1509-1603AA).

Storage:

Preservative: 0.03% Proclin 300. Constituents: 50% Glycerol, 0.01M PBS, pH 7.4

Product Images



Western Blot. Positive WB detected in: HeLa whole cell lysate. All lanes: RTTN antibody at 1:1000. Secondary. Goat polyclonal to rabbit IgG at 1/50000 dilution. Predicted band size: 249, 68, 246, 99 kDa. Observed band size: 249 kDa.