

ETV2 Antibody



PACO62275

Product Information

Size:

50ul

Reactivity:

Human

Source:

Rabbit

Isotype:

IgG

Applications:

ELISA, IF

Recommended dilutions:

ELISA:1:2000-1:10000, IF:1:50-1:200

Protein Background:

Binds to DNA sequences containing the consensus pentanucleotide 5'-CGGA[AT]-3'.

Gene ID:

ETV2

Uniprot

O00321

Synonyms:

ETS translocation variant 2 (Ets-related protein 71), ETV2, ER71 ETSRP71

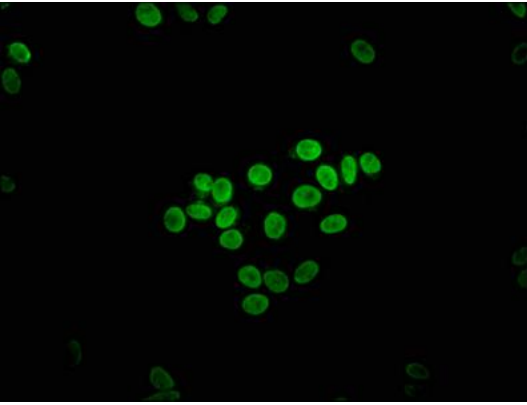
Immunogen:

Recombinant Human ETS translocation variant 2 protein (74-201AA).

Storage:

Preservative: 0.03% Proclin 300. Constituents: 50% Glycerol, 0.01M PBS, pH 7.4

Product Images



Immunofluorescence staining of HepG2 cells with PACO62275 at 1:133, counter-stained with DAPI. The cells were fixed in 4% formaldehyde, permeabilized using 0.2% Triton X-100 and blocked in 10% normal Goat Serum. The cells were then incubated with the antibody overnight at 4°C. The secondary antibody was Alexa Fluor 488-conjugated AffiniPure Goat Anti-Rabbit IgG(H+L).