

DUSP15 Antibody



PACO62207

Product Information

Size:

50ul

Reactivity:

Human

Source:

Rabbit

Isotype:

IgG

Applications:

ELISA, IHC, IF

Recommended dilutions:

ELISA:1:2000-1:10000, IHC:1:20-1:200,
IF:1:50-1:200

Protein Background:

May dephosphorylate MAPK13, ATF2, ERBB3, PDGFRB and SNX6.

Gene ID:

DUSP15

Uniprot

Q9H1R2

Synonyms:

Dual specificity protein phosphatase 15 (EC 3.1.3.16) (EC 3.1.3.48) (VH1-related member Y) (Vaccinia virus VH1-related dual-specific protein phosphatase Y), DUSP15, C20orf57 VHY

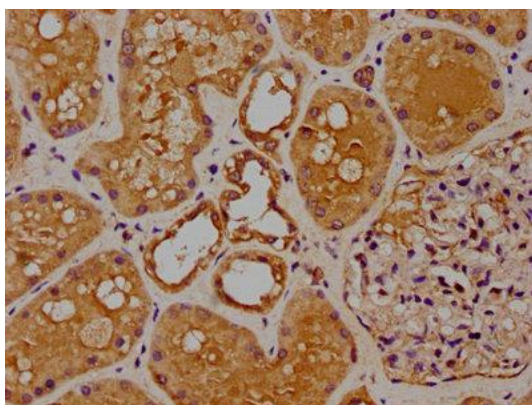
Immunogen:

Recombinant Human Dual specificity protein phosphatase 15 protein (1-295AA).

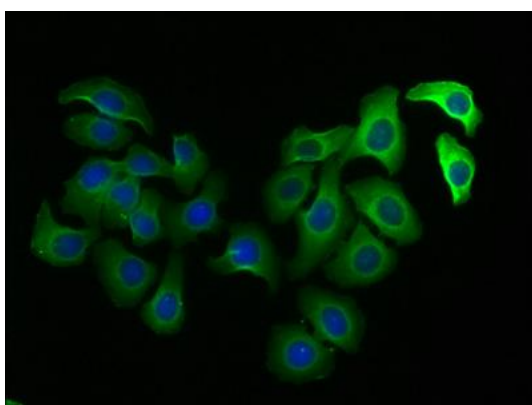
Storage:

Preservative: 0.03% Proclin 300. Constituents: 50% Glycerol, 0.01M PBS, pH 7.4

Product Images



IHC image of PACO62207 diluted at 1:100 and staining in paraffin-embedded human kidney tissue performed on a Leica Bond™ system. After dewaxing and hydration, antigen retrieval was mediated by high pressure in a citrate buffer (pH 6.0). Section was blocked with 10% normal goat serum 30min at RT. Then primary antibody (1% BSA) was incubated at 4°C overnight. The primary is detected by a biotinylated secondary antibody and visualized using an HRP conjugated SP system.



Immunofluorescence staining of A549 cells with PACO62207 at 1:100, counter-stained with DAPI. The cells were fixed in 4% formaldehyde, permeabilized using 0.2% Triton X-100 and blocked in 10% normal Goat Serum. The cells were then incubated with the antibody overnight at 4°C. The secondary antibody was Alexa Fluor 488-conjugated AffiniPure Goat Anti-Rabbit IgG(H+L).