

Product Information

Size:

50ul

Reactivity:

Escherichia coli

Source:

Rabbit

Isotype:

IgG

Applications:

ELISA, WB

Recommended dilutions:

ELISA:1:2000-1:10000, WB:1:1000-1:5000

Protein Background:

Functions as both a chaperone and a metalloprotease. Maintains the integrity of the outer membrane by promoting either the assembly or the elimination of outer membrane proteins, depending on their folding state. Promotes disulfide rearrangement of LptD during its biogenesis, and proteolytic degradation of LptD and BamA when their proper assembly is compromised. May facilitate membrane attachment of LoIP under unfavorable conditions.

Gene ID:

bepA

Uniprot

P66948

Synonyms:

Beta-barrel assembly-enhancing protease (EC 3.4), bepA, yfgC

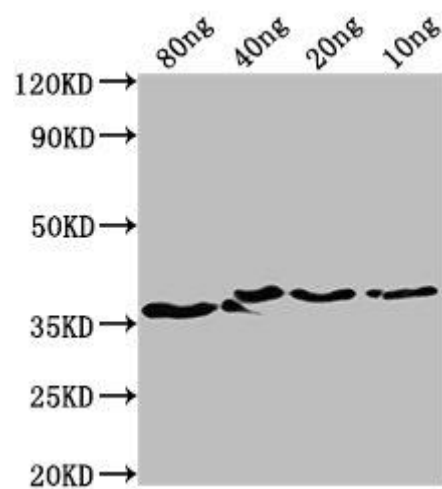
Immunogen:

Recombinant Escherichia coli Beta-barrel assembly-enhancing protease protein (214-487AA).

Storage:

Preservative: 0.03% Proclin 300. Constituents: 50% Glycerol, 0.01M PBS, pH 7.4

Product Images



Western Blot. Positive WB detected in Recombinant protein. All lanes: bepA antibody at 1:2000. Secondary. Goat polyclonal to rabbit IgG at 1/50000 dilution. Predicted band size: 35 kDa. Observed band size: 37 kDa.