

CAT1 Antibody



PACO62071

Product Information

Size:

50ul

Reactivity:

Arabidopsis thaliana

Source:

Rabbit

Isotype:

IgG

Applications:

ELISA, WB

Recommended dilutions:

ELISA:1:2000-1:10000, WB:1:500-1:2000

Protein Background:

Occurs in almost all aerobically respiring organisms and serves to protect cells from the toxic effects of hydrogen peroxide.

Gene ID:

CAT1

Uniprot

Q96528

Synonyms:

Catalase-1 (EC 1.11.1.6), CAT1

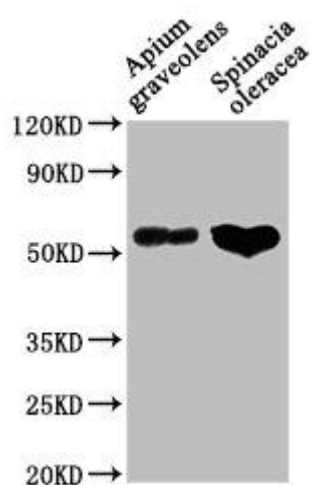
Immunogen:

Recombinant Arabidopsis thaliana Catalase-1 protein (1-492AA).

Storage:

Preservative: 0.03% Proclin 300. Constituents: 50% Glycerol, 0.01M PBS, pH 7.4

Product Images



Western Blot. Positive WB detected in: *Apium graveolens* leaf tissue, *Spinacia oleracea* leaf tissue. All lanes: CAT1 antibody at 1:1000. Secondary. Goat polyclonal to rabbit IgG at 1/50000 dilution. Predicted band size: 57 kDa. Observed band size: 57 kDa.