

Product Information

Size:

50ul

Reactivity:

Arabidopsis thaliana

Source:

Rabbit

Isotype:

IgG

Applications:

ELISA, WB

Recommended dilutions:

ELISA:1:2000-1:10000, WB:1:500-1:2000

Protein Background:

Trypsin-like serine endopeptidase involved in the processing of glyoxysomal higher molecular weight precursor. The dimeric form carries out the specific cleavages needed to remove PTS2-containing presequences, whereas the monomeric form degrades the removed presequences and misfolded proteins (Probable). Not required for degradation of glyoxylate cycle enzymes during seedling development.

Gene ID:

DEG15

Uniprot

Q8VZD4

Synonyms:

Glyoxysomal processing protease, glyoxysomal (AtDEG15) (EC 3.4.21) (DEG-protease), DEG15, GPP

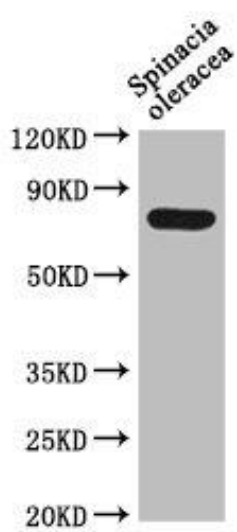
Immunogen:

Recombinant Arabidopsis thaliana Glyoxysomal processing protease, glyoxysomal protein (572-709AA).

Storage:

Preservative: 0.03% Proclin 300. Constituents: 50% Glycerol, 0.01M PBS, pH 7.4

Product Images



Western Blot. Positive WB detected in: *Spinacia oleracea* leaf tissue. All lanes: DEG15 antibody at 1:1000. Secondary. Goat polyclonal to rabbit IgG at 1/50000 dilution. Predicted band size: 77 kDa. Observed band size: 77 kDa.