

AMOTL2 Antibody



PACO62063

Product Information

Size:

50ul

Reactivity:

Human

Source:

Rabbit

Isotype:

IgG

Applications:

ELISA, WB

Recommended dilutions:

ELISA:1:2000-1:10000, WB:1:1000-1:5000

Protein Background:

Regulates the translocation of phosphorylated SRC to peripheral cell-matrix adhesion sites. Required for proper architecture of actin filaments. Inhibits the Wnt/beta-catenin signaling pathway, probably by recruiting CTNNB1 to recycling endosomes and hence preventing its translocation to the nucleus. Participates in angiogenesis. May play a role in the polarity, proliferation and migration of endothelial cells. Selectively promotes FGF-induced MAPK activation through SRC.

Gene ID:

AMOTL2

Uniprot

Q9Y2J4

Synonyms:

Angiotenin-like protein 2 (Leman coiled-coil protein) (LCCP), AMOTL2, KIAA0989

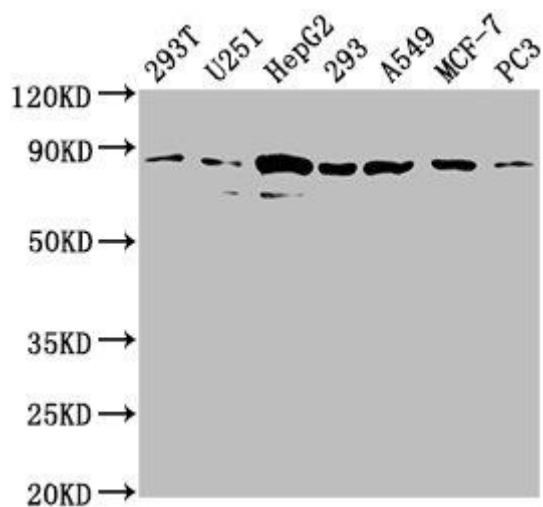
Immunogen:

Peptide sequence from Human Angiotenin-like protein 2 protein (718-737AA).

Storage:

Preservative: 0.03% Proclin 300. Constituents: 50% Glycerol, 0.01M PBS, pH 7.4

Product Images



Western Blot. Positive WB detected in: 293T whole cell lysate, U251 whole cell lysate, HepG2 whole cell lysate, 293 whole cell lysate, A549 whole cell lysate, MCF-7 whole cell lysate, PC3 whole cell lysate. All lanes: AMOTL2 antibody at 1:2000. Secondary. Goat polyclonal to rabbit IgG at 1/50000 dilution. Predicted band size: 86, 92 kDa. Observed band size: 86 kDa.