

Product Information

Size:

50ul

Reactivity:

Arabidopsis thaliana

Source:

Rabbit

Isotype:

IgG

Applications:

ELISA, WB

Recommended dilutions:

ELISA:1:2000-1:10000, WB:1:100-1:1000

Protein Background:

Catalytic subunit of cellulose synthase terminal complexes ('rosettes'), required for beta-1, 4-glucan microfibril crystallization, a major mechanism of the cell wall formation. Involved in the secondary cell wall formation. Required for the xylem cell wall thickening.

Gene ID:

CESA4

Uniprot

Q84JA6

Synonyms:

Cellulose synthase A catalytic subunit 4 [UDP-forming] (AtCesA4) (EC 2.4.1.12) (Protein IRREGULAR XYLEM 5) (AtIRX5), CESA4, IRX5

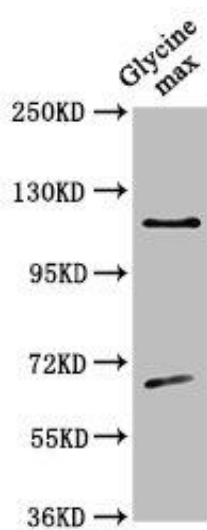
Immunogen:

Peptide sequence from Arabidopsis thaliana Cellulose synthase A catalytic subunit 4 [UDP-forming] protein (924-937AA).

Storage:

Preservative: 0.03% Proclin 300. Constituents: 50% Glycerol, 0.01M PBS, pH 7.4

Product Images



Western Blot. Positive WB detected in: Glycine max leaf tissue. All lanes: CESA4 antibody at 1:500. Secondary. Goat polyclonal to rabbit IgG at 1/50000 dilution. Predicted band size: 120 kDa. Observed band size: 120 kDa.