

PETE Antibody



PACO62035

Product Information

Size:

50ul

Reactivity:

Spinacia oleracea

Source:

Rabbit

Isotype:

IgG

Applications:

ELISA, WB

Recommended dilutions:

ELISA:1:2000-1:10000, WB:1:500-1:2000

Protein Background:

Participates in electron transfer between P700 and the cytochrome b6-f complex in photosystem I.

Gene ID:

PETE

Uniprot

P00289

Synonyms:

Plastocyanin, chloroplastic, PETE

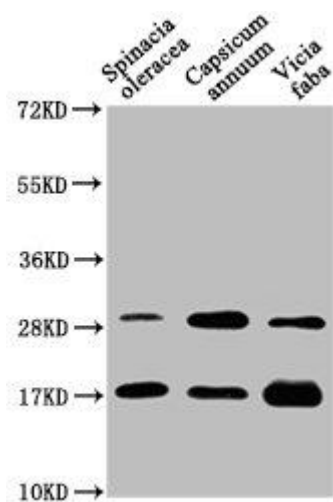
Immunogen:

Recombinant Spinacia oleracea Plastocyanin, chloroplastic protein (70-168AA).

Storage:

Preservative: 0.03% Proclin 300. Constituents: 50% Glycerol, 0.01M PBS, pH 7.4

Product Images



Western Blot. Positive WB detected in: *Spinacia oleracea* leaf tissue, *Capsicum annuum* leaf tissue, *Vicia faba* leaf tissue. All lanes: PETE antibody at 1:1250. Secondary. Goat polyclonal to rabbit IgG at 1/50000 dilution. Predicted band size: 17 kDa. Observed band size: 17 kDa.