

CDKL5 Antibody



PACO61911

Product Information

Size:

50ul

Reactivity:

Human, Rat

Source:

Rabbit

Isotype:

IgG

Applications:

ELISA, WB

Recommended dilutions:

ELISA:1:2000-1:10000, WB:1:1000-1:5000

Protein Background:

Mediates phosphorylation of MECP2.

Gene ID:

CDKL5

Uniprot

O76039

Synonyms:

Cyclin-dependent kinase-like 5 (EC 2.7.11.22) (Serine/threonine-protein kinase 9), CDKL5, STK9

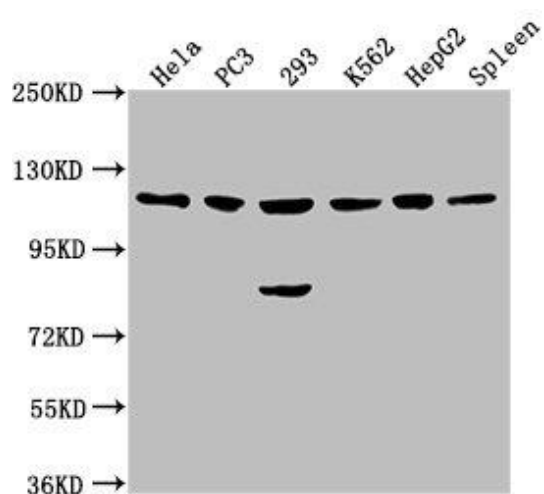
Immunogen:

Recombinant Human Cyclin-dependent kinase-like 5 protein (790-921AA).

Storage:

Preservative: 0.03% Proclin 300. Constituents: 50% Glycerol, 0.01M PBS, pH 7.4

Product Images



Western Blot. Positive WB detected in: HeLa whole cell lysate, PC3 whole cell lysate, 293 whole cell lysate, K562 whole cell lysate, HepG2 whole cell lysate, Rat spleen tissue. All lanes: CDKL5 antibody at 1:2000. Secondary. Goat polyclonal to rabbit IgG at 1/50000 dilution. Predicted band size: 116, 108 kDa. Observed band size: 116 kDa.