

L Antibody



PACO61874

Product Information

Size:

50ul

Reactivity:

Vesicular stomatitis Indiana virus

Source:

Rabbit

Isotype:

IgG

Applications:

ELISA, WB

Recommended dilutions:

ELISA:1:2000-1:10000, WB:1:500-1:5000

Protein Background:**Gene ID:**

L

Uniprot

Q8B0H0

Synonyms:

RNA-directed RNA polymerase L (Protein L) (Large structural protein) (Replicase) (Transcriptase) [Includes: RNA-directed RNA polymerase (EC 2.7.7.48); mRNA (guanine-N(7)-)-methyltransferase (EC 2.1.1.56); GDP polyribonucleotidyltransferase (EC 2.7.7.88); Cap-specific mRNA (nucleoside-2'-O-)-methyltransferase 2 (EC 2.1.1.296)], L

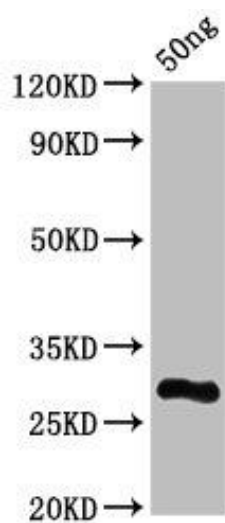
Immunogen:

Recombinant Vesicular stomatitis Indiana virus RNA-directed RNA polymerase L protein (598-784AA).

Storage:

Preservative: 0.03% Proclin 300. Constituents: 50% Glycerol, 0.01M PBS, pH 7.4

Product Images



Western Blot. Positive WB detected in Recombinant protein. All lanes: L antibody at 7 μ g/ml. Secondary. Goat polyclonal to rabbit IgG at 1/50000 dilution. Predicted band size: 28 kDa. Observed band size: 28 kDa.