

PACO61838

---

## Product Information

**Size:**

50ul

**Reactivity:**

Chlamydia trachomatis serovar L2

**Source:**

Rabbit

**Isotype:**

IgG

**Applications:**

ELISA, WB

**Recommended dilutions:**

ELISA:1:2000-1:10000, WB:1:500-1:5000

**Protein Background:**

In elementary bodies (EBs, the infectious stage, which is able to survive outside the host cell) provides the structural integrity of the outer envelope through disulfide cross-links with the small cysteine-rich protein and the large cysteine-rich periplasmic protein. It has been described in publications as the Sarkosyl-insoluble COMC (Chlamydia outer membrane complex), and serves as the functional equivalent of peptidoglycan.

**Gene ID:**

ompA

**Uniprot**

P06597

**Synonyms:**

Major outer membrane porin (MOMP), ompA, omp1L2

**Immunogen:**

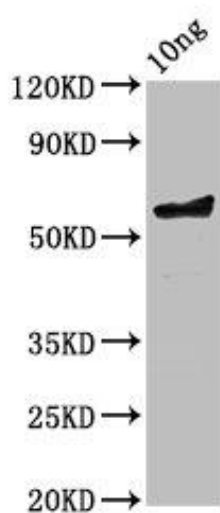
Recombinant Chlamydia trachomatis serovar L2 Major outer membrane porin protein (23-394AA).

**Storage:**

Preservative: 0.03% Proclin 300. Constituents: 50% Glycerol, 0.01M PBS, pH 7.4

## Product Images

---



Western Blot. Positive WB detected in Recombinant protein. All lanes: ompA antibody at 3.6 $\mu$ g/ml. Secondary. Goat polyclonal to rabbit IgG at 1/50000 dilution. Predicted band size: 58 kDa. Observed band size: 58 kDa.