

S Antibody



PACO61802

Product Information

Size:

50ul

Reactivity:

Bovine coronavirus

Source:

Rabbit

Isotype:

IgG

Applications:

ELISA, WB

Recommended dilutions:

ELISA:1:2000-1:10000, WB:1:500-1:5000

Protein Background:

S1 attaches the virion to the cell membrane by binding to 9-O-acetylated sialic acid, containing proteins, initiating the infection.

Gene ID:

S

Uniprot

P15777

Synonyms:

Spike glycoprotein (S glycoprotein) (E2) (Peplomer protein) [Cleaved into: Spike protein S1 (90B); Spike protein S2 (90A)], S

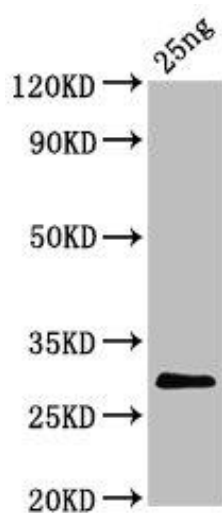
Immunogen:

Recombinant Bovine coronavirus Spike glycoprotein protein (326-540AA).

Storage:

Preservative: 0.03% Proclin 300. Constituents: 50% Glycerol, 0.01M PBS, pH 7.4

Product Images



Western Blot. Positive WB detected in Recombinant protein. All lanes: S antibody at 5.7 μ g/ml. Secondary. Goat polyclonal to rabbit IgG at 1/50000 dilution. Predicted band size: 29 kDa. Observed band size: 29 kDa.