

PRA1 Antibody



PACO61782

Product Information

Size:

50ul

Reactivity:

Candida albicans

Source:

Rabbit

Isotype:

IgG

Applications:

ELISA, WB

Recommended dilutions:

ELISA:1:2000-1:10000, WB:1:500-1:5000

Protein Background:

Gene ID:

PRA1

Uniprot

P87020

Synonyms:

pH-regulated antigen PRA1 (58 kDa fibrinogen-binding mannoprotein), PRA1, FBP1

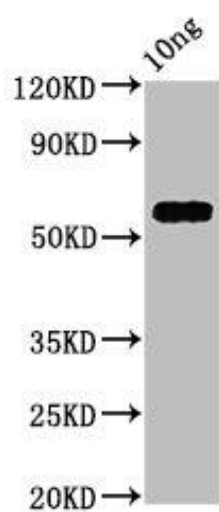
Immunogen:

Recombinant Candida albicans pH-regulated antigen PRA1 protein (16-299AA).

Storage:

Preservative: 0.03% Proclin 300. Constituents: 50% Glycerol, 0.01M PBS, pH 7.4

Product Images



Western Blot. Positive WB detected in Recombinant protein. All lanes: PRA1 antibody at 4.7 μ g/ml. Secondary. Goat polyclonal to rabbit IgG at 1/50000 dilution. Predicted band size: 55 kDa. Observed band size: 55 kDa.