

Product Information

Size:

50ul

Reactivity:

Zebrafish

Source:

Rabbit

Isotype:

IgG

Applications:

ELISA, WB

Recommended dilutions:

ELISA:1:2000-1:10000, WB:1:500-1:5000

Protein Background:

extracellular space, cytokine activity, transforming growth factor beta receptor binding, anterior/posterior axis specification, embryo, BMP signaling pathway, camera-type eye development, cell development, determination of dorsal identity, determination of left/right asymmetry in lateral mesoderm, dorsal/ventral axis specification.

Gene ID:

ndr1

Uniprot

F1QDT8

Synonyms:

ndr1

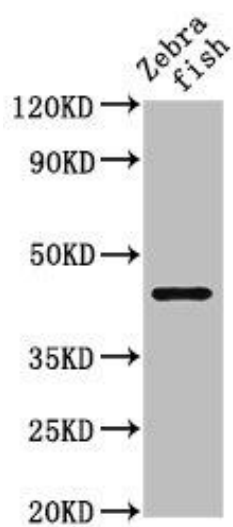
Immunogen:

Recombinant Zebrafish Nodal-related 1 protein (71-213AA).

Storage:

Preservative: 0.03% Proclin 300. Constituents: 50% Glycerol, 0.01M PBS, pH 7.4

Product Images



Western Blot. Positive WB detected in: Zebrafish tissue. All lanes: ndr1 antibody at 5 μ g/ml. Secondary. Goat polyclonal to rabbit IgG at 1/50000 dilution. Predicted band size: 45 kDa. Observed band size: 45 kDa.