

SDR Antibody



PACO61762

Product Information

Size:

50ul

Reactivity:

Zebrafish

Source:

Rabbit

Isotype:

IgG

Applications:

ELISA, WB

Recommended dilutions:

ELISA:1:2000-1:10000, WB:1:500-1:5000

Protein Background:

Gene ID:

SDR

Uniprot

A0A0A0

Synonyms:

SDR

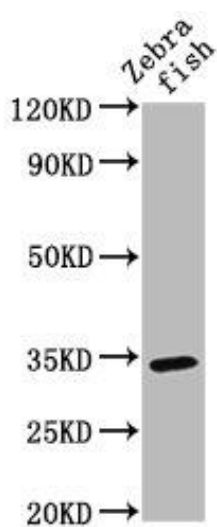
Immunogen:

Recombinant Zebrafish Short-chain alcohol dehydrogenase protein (1-137AA).

Storage:

Preservative: 0.03% Proclin 300. Constituents: 50% Glycerol, 0.01M PBS, pH 7.4

Product Images



Western Blot. Positive WB detected in: Zebrafish tissue. All lanes: SDR antibody at 3 μ g/ml. Secondary. Goat polyclonal to rabbit IgG at 1/50000 dilution. Predicted band size: 34 kDa. Observed band size: 34 kDa.