

PACO61758

---

## Product Information

**Size:**

50ul

**Reactivity:**

Zebrafish

**Source:**

Rabbit

**Isotype:**

IgG

**Applications:**

ELISA, WB

**Recommended dilutions:**

ELISA:1:2000-1:10000, WB:1:500-1:5000

**Protein Background:**

nucleus, SMAD binding, cartilage development, dorsal/ventral pattern formation, heart looping, negative regulation of BMP signaling pathway, negative regulation of cell differentiation, negative regulation of transforming growth factor beta receptor signaling pathway, neuron development.

**Gene ID:**

skib

**Uniprot**

Q9YI02

**Synonyms:**

skib

**Immunogen:**

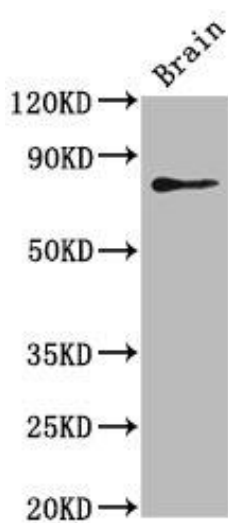
Recombinant Zebrafish Nuclear oncoprotein protein (289-438AA).

**Storage:**

Preservative: 0.03% Proclin 300. Constituents: 50% Glycerol, 0.01M PBS, pH 7.4

## Product Images

---



Western Blot. Positive WB detected in: Zebrafish brain tissue. All lanes: skib antibody at 5 $\mu$ g/ml. Secondary. Goat polyclonal to rabbit IgG at 1/50000 dilution. Predicted band size: 80 kDa. Observed band size: 80 kDa.