

Product Information

Size:

50ul

Reactivity:

Thermus thermophilus

Source:

Rabbit

Isotype:

IgG

Applications:

ELISA, WB

Recommended dilutions:

ELISA:1:2000-1:10000, WB:1:500-1:5000

Protein Background:

CRISPR (clustered regularly interspaced short palindromic repeat), is an adaptive immune system that provides protection against mobile genetic elements (viruses, transposable elements and conjugative plasmids). CRISPR clusters contain sequences complementary to antecedent mobile elements and target invading nucleic acid. CRISPR clusters are transcribed and processed into CRISPR RNA (crRNA). Cas3 plus Cascade participate in CRISPR interference, the third stage of CRISPR immunity. The N-terminal domain (residues 6-260) acts as a ssDNA endonuclease, has no activity on dsDNA.

Gene ID:

cas3

Uniprot

Q53VY2

Synonyms:

CRISPR-associated endonuclease/helicase Cas3 (EC 3.1) (EC 3.6.4) (CRISPR-associated ssDNA endonuclease/helicase Cas3), cas3

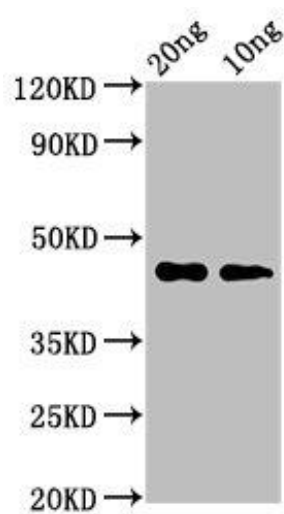
Immunogen:

Recombinant Thermus thermophilus CRISPR-associated endonuclease/helicase Cas3 protein (120-226AA).

Storage:

Preservative: 0.03% Proclin 300. Constituents: 50% Glycerol, 0.01M PBS, pH 7.4

Product Images



Western Blot. Positive WB detected in Recombinant protein. All lanes: cas3 antibody at 3.2 μ g/ml. Secondary. Goat polyclonal to rabbit IgG at 1/50000 dilution. Predicted band size: 45 kDa. Observed band size: 45 kDa.