

## Product Information

**Size:**

50ul

**Reactivity:**

Human

**Source:**

Rabbit

**Isotype:**

IgG

**Applications:**

ELISA, WB, IF

**Recommended dilutions:**

ELISA:1:2000-1:10000, WB:1:500-1:5000,  
IF:1:50-1:200

**Protein Background:**

Receptor for class I MHC antigens. Recognizes a broad spectrum of HLA-A, HLA-B, HLA-C and HLA-G alleles. Involved in the down-regulation of the immune response and the development of tolerance. Competes with CD8A for binding to class I MHC antigens. Inhibits FCGR1A-mediated phosphorylation of cellular proteins and mobilization of intracellular calcium ions.

**Gene ID:**

LILRB2

**Uniprot**

Q8N423

**Synonyms:**

Leukocyte immunoglobulin-like receptor subfamily B member 2 (LIR-2) (Leukocyte immunoglobulin-like receptor 2) (CD85 antigen-like family member D) (Immunoglobulin-like transcript 4) (ILT-4) (Monocyte/macrophage immunoglobulin-like receptor 10) (MIR-10) (CD antigen CD85d), LILRB2, ILT4 LIR2 MIR10

**Immunogen:**

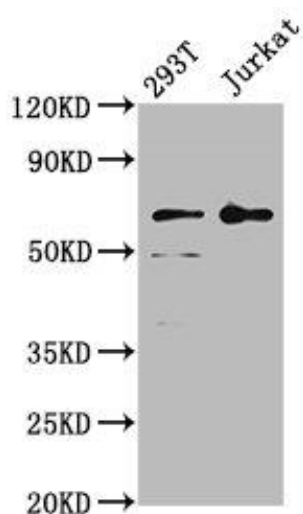
Recombinant Human Leukocyte immunoglobulin-like receptor subfamily B member 2 protein (406-563AA).

**Storage:**

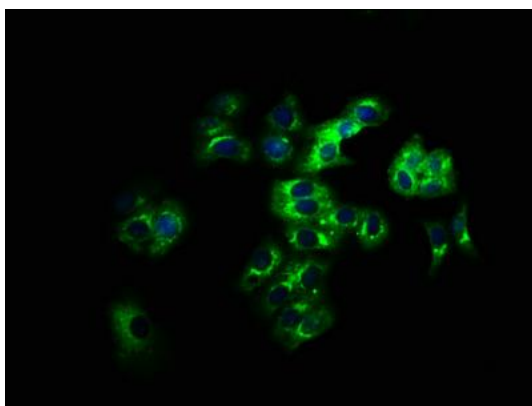
Preservative: 0.03% Proclin 300. Constituents: 50% Glycerol, 0.01M PBS, pH 7.4

## Product Images

---



Western Blot. Positive WB detected in: 293T whole cell lysate, Jurkat whole cell lysate. All lanes: LILRB2 antibody at 4 $\mu$ g/ml. Secondary: Goat polyclonal to rabbit IgG at 1/50000 dilution. Predicted band size: 66, 65, 56, 52 kDa. Observed band size: 66 kDa.



Immunofluorescence staining of HepG2 cells with PACO61742 at 1:166, counter-stained with DAPI. The cells were fixed in 4% formaldehyde, permeabilized using 0.2% Triton X-100 and blocked in 10% normal Goat Serum. The cells were then incubated with the antibody overnight at 4°C. The secondary antibody was Alexa Fluor 488-conjugated AffiniPure Goat Anti-Rabbit IgG(H+L).