

EFHD1 Antibody



PACO61678

Product Information

Size:

50ug

Reactivity:

Human

Source:

Rabbit

Isotype:

IgG

Applications:

ELISA, WB, IHC, IF

Recommended dilutions:

ELISA:1:2000-1:10000, WB:1:500-1:5000,
IHC:1:500-1:1000, IF:1:50-1:200

Protein Background:

Acts as a calcium sensor for mitochondrial flash (mitoflash) activation, an event characterized by stochastic bursts of superoxide production. May play a role in neuronal differentiation.

Gene ID:

EFHD1

Uniprot

Q9BUP0

Synonyms:

EF-hand domain-containing protein D1, EF-hand domain-containing protein 1, Swiprosin-2, EFHD1, SWS2, PP3051

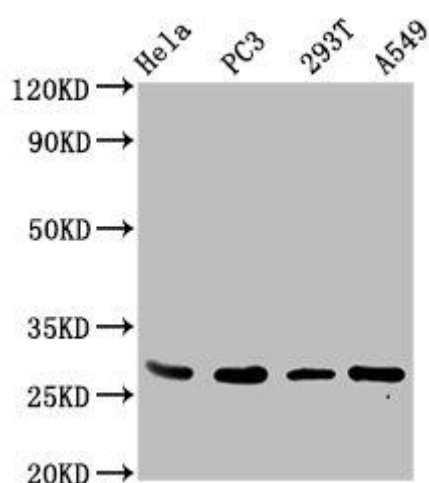
Immunogen:

Recombinant Human EF-hand domain-containing protein D1 protein (15-72AA).

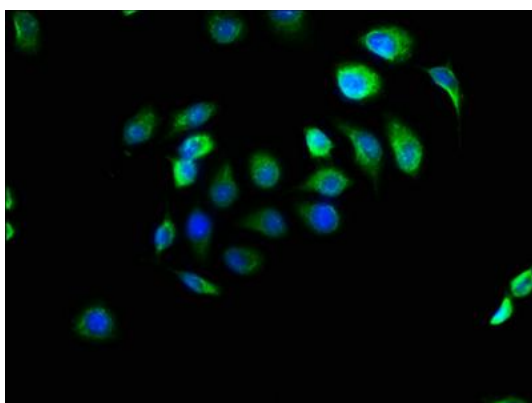
Storage:

Preservative: 0.03% Proclin 300. Constituents: 50% Glycerol, 0.01M PBS, pH 7.4

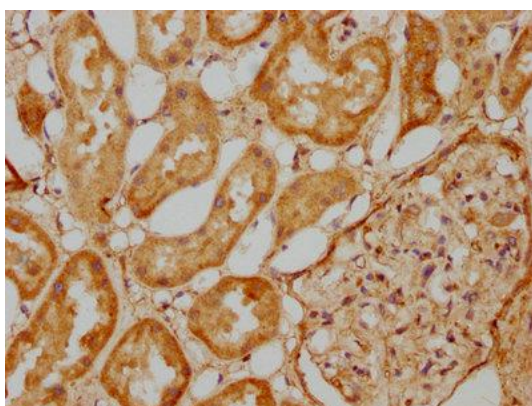
Product Images



Western Blot. Positive WB detected in: HeLa whole cell lysate, PC-3 whole cell lysate, 293T whole cell lysate, A549 whole cell lysate. All lanes: EFHD1 antibody at 3.4 μ g/ml. Secondary: Goat polyclonal to rabbit IgG at 1/50000 dilution. Predicted band size: 27, 17 kDa. Observed band size: 27 kDa.



Immunofluorescence staining of A549 cells with PACO61678 at 1:166, counter-stained with DAPI. The cells were fixed in 4% formaldehyde, permeabilized using 0.2% Triton X-100 and blocked in 10% normal Goat Serum. The cells were then incubated with the antibody overnight at 4°C. The secondary antibody was Alexa Fluor 488-conjugated AffiniPure Goat Anti-Rabbit IgG(H+L).



IHC image of PACO61678 diluted at 1:500 and staining in paraffin-embedded human kidney tissue performed on a Leica Bond™ system. After dewaxing and hydration, antigen retrieval was mediated by high pressure in a citrate buffer (pH 6.0). Section was blocked with 10% normal goat serum 30min at RT. Then primary antibody (1% BSA) was incubated at 4°C overnight. The primary is detected by a biotinylated secondary antibody and visualized using an HRP conjugated SP system.