

# BARD1 Antibody



PACO61670

---

## Product Information

**Size:**

50ug

**Reactivity:**

Human

**Source:**

Rabbit

**Isotype:**

IgG

**Applications:**

ELISA, WB

**Recommended dilutions:**

ELISA:1:2000-1:10000, WB:1:500-1:5000

**Protein Background:**

E3 ubiquitin-protein ligase. The BRCA1-BARD1 heterodimer specifically mediates the formation of 'Lys-6'-linked polyubiquitin chains and coordinates a diverse range of cellular pathways such as DNA damage repair, ubiquitination and transcriptional regulation to maintain genomic stability. Plays a central role in the control of the cell cycle in response to DNA damage. Acts by mediating ubiquitin E3 ligase activity that is required for its tumor suppressor function. Also forms a heterodimer with CSTF1/CSTF-50 to modulate mRNA processing and RNAP II stability by inhibiting pre-mRNA 3' cleavage.

**Gene ID:**

BARD1

**Uniprot**

Q99728

**Synonyms:**

BRCA1-associated RING domain protein 1, RING-type E3 ubiquitin transferase BARD1, BARD1

**Immunogen:**

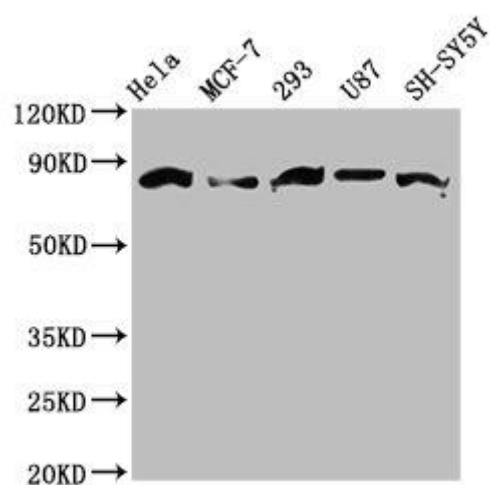
Recombinant Human BRCA1-associated RING domain protein 1 protein (428-777AA).

**Storage:**

Preservative: 0.03% Proclin 300. Constituents: 50% Glycerol, 0.01M PBS, pH 7.4

## Product Images

---



Western Blot. Positive WB detected in: HeLa whole cell lysate, MCF-7 whole cell lysate, 293 whole cell lysate, U87 whole cell lysate, SH-SY5Y whole cell lysate. All lanes: BARD1 antibody at 3.6 $\mu$ g/ml. Secondary: Goat polyclonal to rabbit IgG at 1/50000 dilution. Predicted band size: 87, 85, 76, 15 kDa. Observed band size: 87 kDa.