

# CASZ1 Antibody



PACO61646

---

## Product Information

**Size:**

50ug

**Reactivity:**

Human

**Source:**

Rabbit

**Isotype:**

IgG

**Applications:**

ELISA, WB, IHC

**Recommended dilutions:**

ELISA:1:2000-1:10000, WB:1:500-1:5000,  
IHC:1:20-1:200

**Protein Background:**

Transcriptional activator. Involved in vascular assembly and morphogenesis through direct transcriptional regulation of EGFL7.

**Gene ID:**

CASZ1

**Uniprot**

Q86V15

**Synonyms:**

Zinc finger protein castor homolog 1, Castor-related protein, Putative survival-related protein, Zinc finger protein 693, CASZ1, CST, SRG, ZNF693

**Immunogen:**

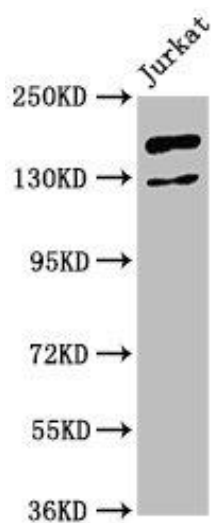
Recombinant Human Zinc finger protein castor homolog 1 protein (127-266AA).

**Storage:**

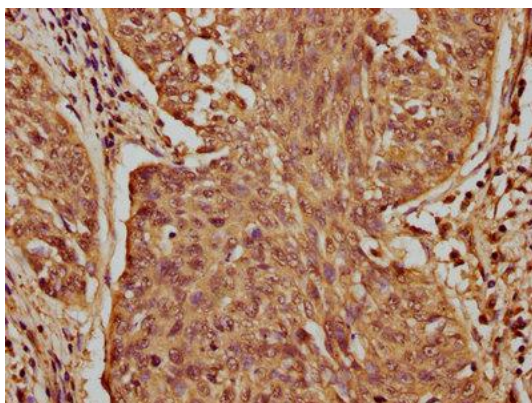
Preservative: 0.03% Proclin 300. Constituents: 50% Glycerol, 0.01M PBS, pH 7.4

## Product Images

---



Western Blot. Positive WB detected in: Jurkat whole cell lysate. All lanes: CASZ1 antibody at 4.8 $\mu$ g/ml. Secondary. Goat polyclonal to rabbit IgG at 1/50000 dilution. Predicted band size: 191, 125 kDa. Observed band size: 191 kDa.



IHC image of PACO61646 diluted at 1:100 and staining in paraffin-embedded human cervical cancer performed on a Leica Bond™ system. After dewaxing and hydration, antigen retrieval was mediated by high pressure in a citrate buffer (pH 6.0). Section was blocked with 10% normal goat serum 30min at RT. Then primary antibody (1% BSA) was incubated at 4°C overnight. The primary is detected by a biotinylated secondary antibody and visualized using an HRP conjugated SP system.