

## Product Information

**Size:**

50ug

**Reactivity:**

Human

**Source:**

Rabbit

**Isotype:**

IgG

**Applications:**

ELISA, IHC

**Recommended dilutions:**

ELISA:1:2000-1:10000, IHC:1:200-1:500

**Protein Background:**

basal cortex, positive regulation of basement membrane assembly involved in embryonic body morphogenesis, regulation of epithelial to mesenchymal transition, regulation of gastrulation, regulation of microtubule cytoskeleton organization.

**Gene ID:**

PHLDB1

**Uniprot**

Q86UU1

**Synonyms:**

Pleckstrin homology-like domain family B member 1, Protein LL5-alpha, PHLDB1, KIAA0638, LL5A, DLNB07

**Immunogen:**

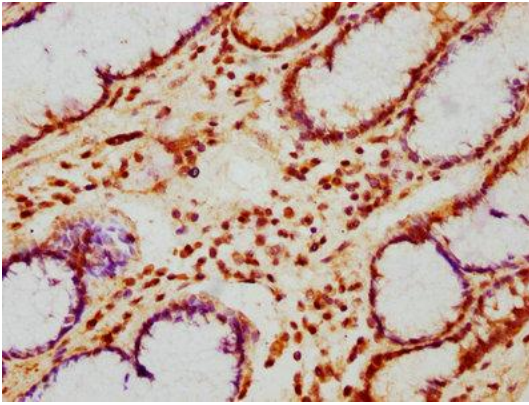
Recombinant Human Pleckstrin homology-like domain family B member 1 protein (233-423AA).

**Storage:**

Preservative: 0.03% Proclin 300. Constituents: 50% Glycerol, 0.01M PBS, pH 7.4

## Product Images

---



IHC image of PACO61642 diluted at 1:200 and staining in paraffin-embedded human gastric cancer performed on a Leica Bond™ system. After dewaxing and hydration, antigen retrieval was mediated by high pressure in a citrate buffer (pH 6.0). Section was blocked with 10% normal goat serum 30min at RT. Then primary antibody (1% BSA) was incubated at 4°C overnight. The primary is detected by a biotinylated secondary antibody and visualized using an HRP conjugated SP system.