

RHBDF1 Antibody



PACO61486

Product Information

Size:

50ug

Reactivity:

Human

Source:

Rabbit

Isotype:

IgG

Applications:

ELISA, IHC

Recommended dilutions:

ELISA:1:2000-1:10000, IHC:1:200-1:500

Protein Background:

Rhomboid protease-like protein which has no protease activity but regulates the secretion of several ligands of the epidermal growth factor receptor. Indirectly activates the epidermal growth factor receptor signaling pathway and may thereby regulate sleep, cell survival, proliferation and migration.

Gene ID:

RHBDF1

Uniprot

Q96CC6

Synonyms:

Inactive rhomboid protein 1, iRhom1, Epidermal growth factor receptor-related protein, Rhomboid 5 homolog 1, Rhomboid family member 1, p100hRho, RHBDF1, C16orf8, DIST1, IRHOM1

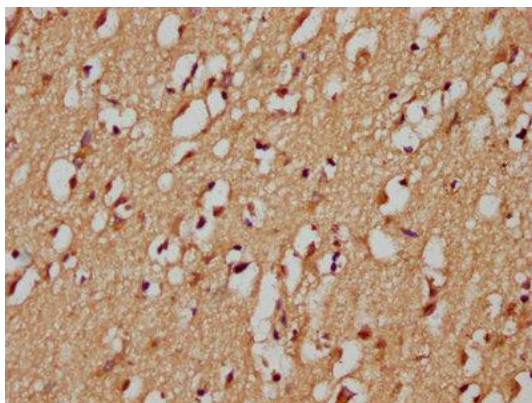
Immunogen:

Recombinant Human Complement factor H-related protein 1 protein (132-221AA).

Storage:

Preservative: 0.03% Proclin 300. Constituents: 50% Glycerol, 0.01M PBS, pH 7.4

Product Images



IHC image of PACO61486 diluted at 1:200 and staining in paraffin-embedded human brain tissue performed on a Leica Bond™ system. After dewaxing and hydration, antigen retrieval was mediated by high pressure in a citrate buffer (pH 6.0). Section was blocked with 10% normal goat serum 30min at RT. Then primary antibody (1% BSA) was incubated at 4°C overnight. The primary is detected by a biotinylated secondary antibody and visualized using an HRP conjugated SP system.



IHC image of PACO61486 diluted at 1:200 and staining in paraffin-embedded human skeletal muscle tissue performed on a Leica Bond™ system. After dewaxing and hydration, antigen retrieval was mediated by high pressure in a citrate buffer (pH 6.0). Section was blocked with 10% normal goat serum 30min at RT. Then primary antibody (1% BSA) was incubated at 4°C overnight. The primary is detected by a biotinylated secondary antibody and visualized using an HRP conjugated SP system.