

CCDC170 Antibody



PACO61482

Product Information

Size:

50ug

Reactivity:

Human

Source:

Rabbit

Isotype:

IgG

Applications:

ELISA, WB

Recommended dilutions:

ELISA:1:2000-1:10000, WB:1:500-1:5000

Protein Background:

Gene ID:

CCDC170

Uniprot

Q8IYT3

Synonyms:

Coiled-coil domain-containing protein 170, CCDC170, C6orf97

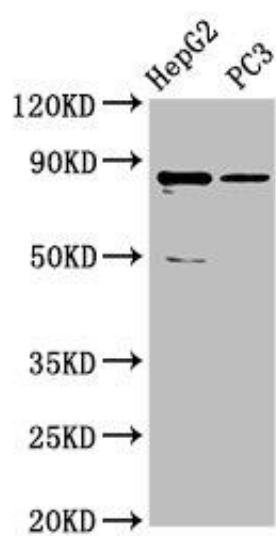
Immunogen:

Recombinant Human Coiled-coil domain-containing protein 170 protein (574-651AA).

Storage:

Preservative: 0.03% Proclin 300. Constituents: 50% Glycerol, 0.01M PBS, pH 7.4

Product Images



Western Blot. Positive WB detected in: HepG2 whole cell lysate, PC-3 whole cell lysate. All lanes: CCDC170 antibody at 5 μ g/ml. Secondary. Goat polyclonal to rabbit IgG at 1/50000 dilution. Predicted band size: 83 kDa. Observed band size: 83 kDa.