

RCE1 Antibody



PACO61470

Product Information

Size:

50ug

Reactivity:

Human

Source:

Rabbit

Isotype:

IgG

Applications:

ELISA, WB

Recommended dilutions:

ELISA:1:2000-1:10000, WB:1:500-1:5000

Protein Background:

Proteolytically removes the C-terminal three residues of farnesylated and geranylated proteins. Seems to be able to process K-Ras, N-Ras, H-Ras, RAP1B and G-gamma-1.

Gene ID:

RCE1

Uniprot

Q9Y256

Synonyms:

CAAX prenyl protease 2, Farnesylated proteins-converting enzyme 2, FACE-2, Prenyl protein-specific endoprotease 2, RCE1 homolog, hRCE1, RCE1, FACE2, RCE1A, RCE1B

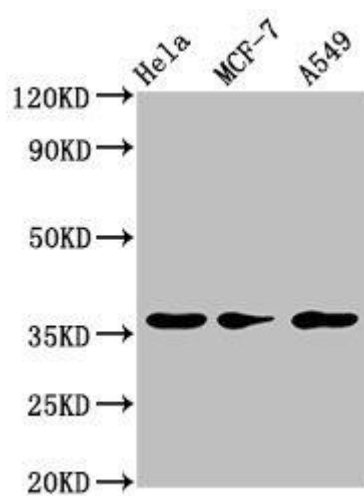
Immunogen:

Recombinant Human CAAX prenyl protease 2 protein (133-185AA).

Storage:

Preservative: 0.03% Proclin 300. Constituents: 50% Glycerol, 0.01M PBS, pH 7.4

Product Images



Western Blot. Positive WB detected in: HeLa whole cell lysate, MCF-7 whole cell lysate, A549 whole cell lysate. All lanes: RCE1 antibody at 3.2 μ g/ml. Secondary. Goat polyclonal to rabbit IgG at 1/50000 dilution. Predicted band size: 36 kDa. Observed band size: 36 kDa.