

PURG Antibody



PACO61466

Product Information

Size:

50ug

Reactivity:

Human

Source:

Rabbit

Isotype:

IgG

Applications:

ELISA, WB

Recommended dilutions:

ELISA:1:2000-1:10000, WB:1:500-1:5000

Protein Background:

Gene ID:

PURG

Uniprot

Q9UJV8

Synonyms:

Purine-rich element-binding protein gamma, PURG

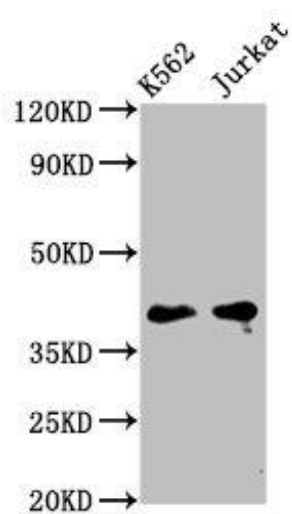
Immunogen:

Recombinant Human Purine-rich element-binding protein γ protein (242-345AA).

Storage:

Preservative: 0.03% Proclin 300. Constituents: 50% Glycerol, 0.01M PBS, pH 7.4

Product Images



Western Blot. Positive WB detected in: K562 whole cell lysate, Jurkat whole cell lysate. All lanes: PURG antibody at 5 μ g/ml. Secondary. Goat polyclonal to rabbit IgG at 1/50000 dilution. Predicted band size: 40, 37 kDa. Observed band size: 40 kDa.