

# YY1AP1 Antibody



PACO61462

---

## Product Information

**Size:**

50ug

**Reactivity:**

Human

**Source:**

Rabbit

**Isotype:**

IgG

**Applications:**

ELISA, WB, IHC, IF

**Recommended dilutions:**

ELISA:1:2000-1:10000, WB:1:1000-1:5000,  
IHC:1:200-1:500, IF:1:50-1:200

**Protein Background:**

Associates with the INO80 chromatin remodeling complex, which is responsible for transcriptional regulation, DNA repair, and replication. Enhances transcription activation by YY1. Plays a role in cell cycle regulation.

**Gene ID:**

YY1AP1

**Uniprot**

Q9H869

**Synonyms:**

YY1-associated protein 1, Hepatocellular carcinoma susceptibility protein1, YY1AP1

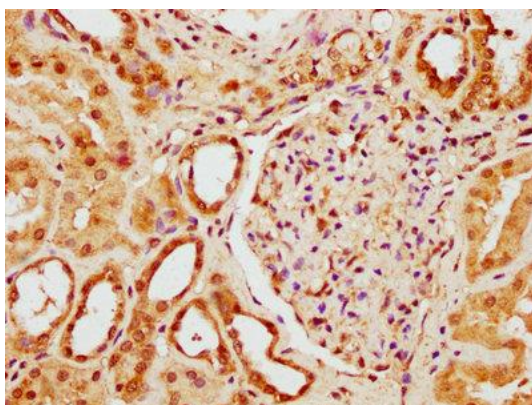
**Immunogen:**

Recombinant Human YY1-associated protein 1 protein (335-466AA).

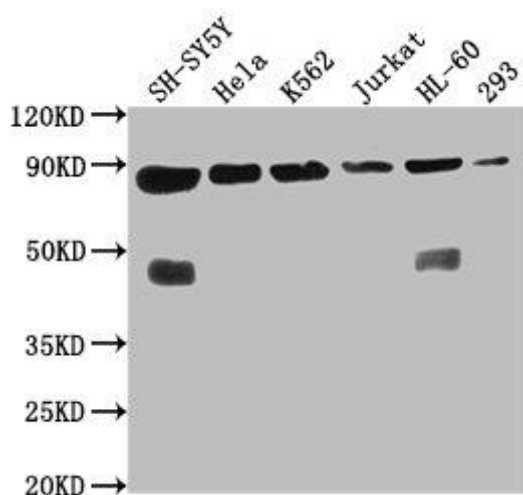
**Storage:**

Preservative: 0.03% Proclin 300. Constituents: 50% Glycerol, 0.01M PBS, pH 7.4

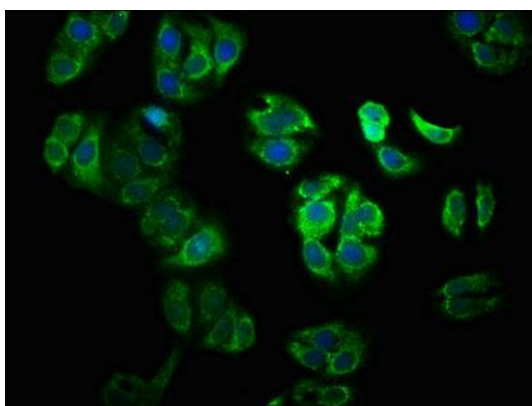
## Product Images



IHC image of PACO61462 diluted at 1:300 and staining in paraffin-embedded human kidney tissue performed on a Leica Bond™ system. After dewaxing and hydration, antigen retrieval was mediated by high pressure in a citrate buffer (pH 6.0). Section was blocked with 10% normal goat serum 30min at RT. Then primary antibody (1% BSA) was incubated at 4°C overnight. The primary is detected by a biotinylated secondary antibody and visualized using an HRP conjugated SP system.



Western Blot. Positive WB detected in: SH-SY5Y whole cell lysate, HeLa whole cell lysate, K562 whole cell lysate, Jurkat whole cell lysate, HL60 whole cell lysate, 293 whole cell lysate. All lanes: YY1AP1 antibody at 1:2000. Secondary. Goat polyclonal to rabbit IgG at 1/50000 dilution. Predicted band size: 88, 84, 82, 81, 76, 80, 51, 96, 98 kDa. Observed band size: 88 kDa.



Immunofluorescence staining of HepG2 cells with PACO61462 at 1:100, counter-stained with DAPI. The cells were fixed in 4% formaldehyde, permeabilized using 0.2% Triton X-100 and blocked in 10% normal Goat Serum. The cells were then incubated with the antibody overnight at 4°C. The secondary antibody was Alexa Fluor 488-conjugated AffiniPure Goat Anti-Rabbit IgG(H+L).