

MRO Antibody



PACO61458

Product Information

Size:

50ug

Reactivity:

Human

Source:

Rabbit

Isotype:

IgG

Applications:

ELISA, WB, IF

Recommended dilutions:

ELISA:1:2000-1:10000, WB:1:500-1:5000,
IF:1:50-1:200

Protein Background:

Gene ID:

MRO

Uniprot

Q9BYG7

Synonyms:

Protein maestro, Male-specific transcription in the developing reproductive organs, Protein B29, MRO, B29, C18orf3

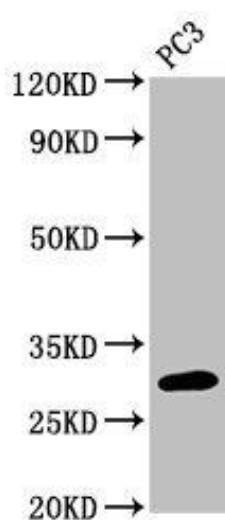
Immunogen:

Recombinant Human Protein maestro protein (12-85AA).

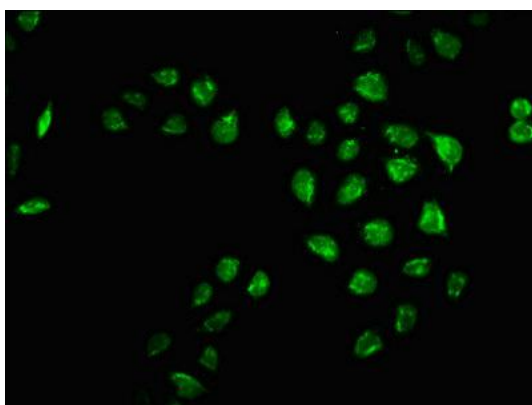
Storage:

Preservative: 0.03% Proclin 300. Constituents: 50% Glycerol, 0.01M PBS, pH 7.4

Product Images



Western Blot. Positive WB detected in: PC-3 whole cell lysate. All lanes: MRO antibody at 3 μ g/ml. Secondary: Goat polyclonal to rabbit IgG at 1/50000 dilution. Predicted band size: 30, 25, 31, 24 kDa. Observed band size: 30 kDa.



Immunofluorescence staining of HeLa cells with PACO61458 at 1:66, counter-stained with DAPI. The cells were fixed in 4% formaldehyde, permeabilized using 0.2% Triton X-100 and blocked in 10% normal Goat Serum. The cells were then incubated with the antibody overnight at 4°C. The secondary antibody was Alexa Fluor 488-conjugated AffiniPure Goat Anti-Rabbit IgG(H+L).