

PACO61398

Product Information

Size:

50ug

Reactivity:

Zebrafish

Source:

Rabbit

Isotype:

IgG

Applications:

ELISA, WB

Recommended dilutions:

ELISA:1:2000-1:10000, WB:1:500-1:5000

Protein Background:

Involved in the metabolism of retinoic acid, (RA), rendering this classical morphogen inactive through oxidation. Appears to be involved in the inactivation of all-trans-retinoic acid, (RA). Plays a role in skeletal development.

Gene ID:

cyp26b1

Uniprot

Q6EIG3

Synonyms:

Cytochrome P450 26B1, Retinoic acid, metabolizing cytochrome, cyp26b1

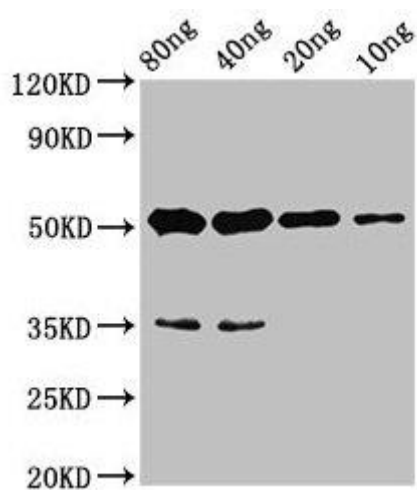
Immunogen:

Recombinant Zebrafish Cytochrome P450 26B1 protein (366-511AA).

Storage:

Preservative: 0.03% Proclin 300. Constituents: 50% Glycerol, 0.01M PBS, pH 7.4

Product Images



Western Blot. Positive WB detected in Recombinant protein. All lanes: cyp26b1 antibody at 4.4 μ g/ml. Secondary. Goat polyclonal to rabbit IgG at 1/50000 dilution. Predicted band size: 46 kDa. Observed band size: 51 kDa.