

Product Information

Size:

50ug

Reactivity:

Human

Source:

Rabbit

Isotype:

IgG

Applications:

ELISA, IF

Recommended dilutions:

ELISA:1:2000-1:10000, IF:1:50-1:200

Protein Background:

Dual specificity protein phosphatase; active with phosphotyrosine, phosphoserine and phosphothreonine residues. The highest relative activity is toward ERK1.

Gene ID:

DUSP5

Uniprot

Q16690

Synonyms:

Dual specificity protein phosphatase 5, Dual specificity protein phosphatase hVH3, DUSP5, VH3

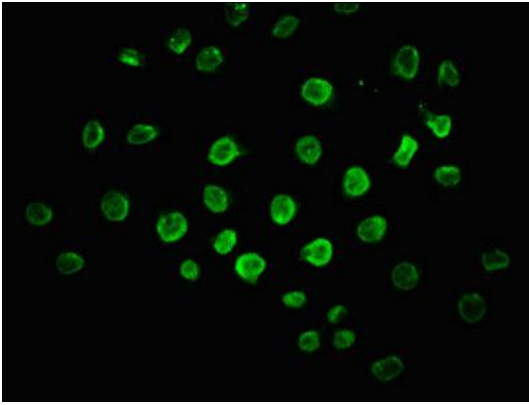
Immunogen:

Recombinant Human Dual specificity protein phosphatase 5 protein (56-181AA).

Storage:

Preservative: 0.03% Proclin 300. Constituents: 50% Glycerol, 0.01M PBS, pH 7.4

Product Images



Immunofluorescence staining of A549 cells with PACO61378 at 1:100, counter-stained with DAPI. The cells were fixed in 4% formaldehyde, permeabilized using 0.2% Triton X-100 and blocked in 10% normal Goat Serum. The cells were then incubated with the antibody overnight at 4°C. The secondary antibody was Alexa Fluor 488-conjugated AffiniPure Goat Anti-Rabbit IgG(H+L).