

PACO61374

Product Information

Size:

50ug

Reactivity:

Human

Source:

Rabbit

Isotype:

IgG

Applications:

ELISA, IHC

Recommended dilutions:

ELISA:1:2000-1:10000, IHC:1:200-1:500

Protein Background:

Acts as a RAC1 guanine nucleotide exchange factor (GEF).

Gene ID:

ARHGEF6

Uniprot

Q15052

Synonyms:

Rho guanine nucleotide exchange factor 6, Alpha-Pix, COOL-2, PAK-interacting exchange factor alpha, Rac/Cdc42 guanine nucleotide exchange factor 6, ARHGEF6, COOL2, KIAA0006, PIXA

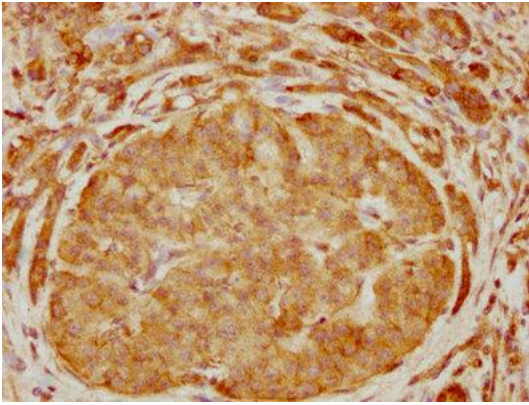
Immunogen:

Recombinant Human Rho guanine nucleotide exchange factor 6 protein (108-239AA).

Storage:

Preservative: 0.03% Proclin 300. Constituents: 50% Glycerol, 0.01M PBS, pH 7.4

Product Images



IHC image of PACO61374 diluted at 1:400 and staining in paraffin-embedded human pancreatic cancer performed on a Leica Bond™ system. After dewaxing and hydration, antigen retrieval was mediated by high pressure in a citrate buffer (pH 6.0). Section was blocked with 10% normal goat serum 30min at RT. Then primary antibody (1% BSA) was incubated at 4°C overnight. The primary is detected by a biotinylated secondary antibody and visualized using an HRP conjugated SP system.