

# STE13 Antibody



PACO61366

---

## Product Information

**Size:**

50ug

**Reactivity:**

Saccharomyces cerevisiae

**Source:**

Rabbit

**Isotype:**

IgG

**Applications:**

ELISA, WB

**Recommended dilutions:**

ELISA:1:2000-1:10000, WB:1:500-1:5000

**Protein Background:**

Responsible for the proteolytic maturation of the alpha-factor precursor.

**Gene ID:**

STE13

**Uniprot**

P33894

**Synonyms:**

Dipeptidyl aminopeptidase A, DPAP A, YSCIV, STE13, YCI1, YOR219C, YOR50-9

**Immunogen:**

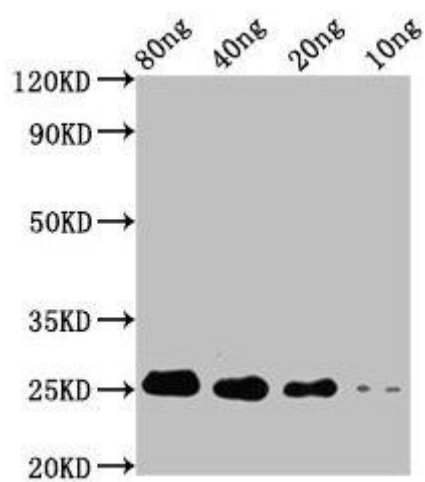
Recombinant Saccharomyces cerevisiae Dipeptidyl aminopeptidase A protein (1-119AA).

**Storage:**

Preservative: 0.03% Proclin 300. Constituents: 50% Glycerol, 0.01M PBS, pH 7.4

## Product Images

---



Western Blot. Positive WB detected in Recombinant protein. All lanes: STE13 antibody at 4 $\mu$ g/ml. Secondary. Goat polyclonal to rabbit IgG at 1/50000 dilution. Predicted band size: 18 kDa. Observed band size: 25 kDa.