

PACO61358

---

## Product Information

**Size:**

50ug

**Reactivity:**

Zebrafish

**Source:**

Rabbit

**Isotype:**

IgG

**Applications:**

ELISA, WB

**Recommended dilutions:**

ELISA:1:2000-1:10000, WB:1:500-1:5000

**Protein Background:**

Regulates a signal transduction pathway linking plasma membrane receptors to the assembly of focal adhesions and actin stress fibers.

**Gene ID:**

rhoac

**Uniprot**

Q7T2E8

**Synonyms:**

Rho-related GTP-binding protein RhoA-C, rhoac

**Immunogen:**

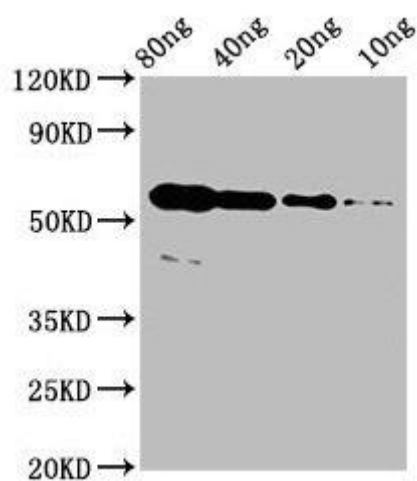
Recombinant Zebrafish Rho-related GTP-binding protein RhoA-C protein (1-190AA).

**Storage:**

Preservative: 0.03% Proclin 300. Constituents: 50% Glycerol, 0.01M PBS, pH 7.4

## Product Images

---



Western Blot. Positive WB detected in Recombinant protein. All lanes: rhoac antibody at 4 $\mu$ g/ml. Secondary. Goat polyclonal to rabbit IgG at 1/50000 dilution. Predicted band size: 51 kDa. Observed band size: 56 kDa.