

# ptprsa Antibody



PACO61350

---

## Product Information

**Size:**

50ug

**Reactivity:**

Zebrafish

**Source:**

Rabbit

**Isotype:**

IgG

**Applications:**

ELISA, WB

**Recommended dilutions:**

ELISA:1:2000-1:10000, WB:1:500-1:5000

**Protein Background:**

**Gene ID:**

ptprsa

**Uniprot**

F1QLA4

**Synonyms:**

Protein tyrosine phosphatase, receptor type, s, a, ptprsa

**Immunogen:**

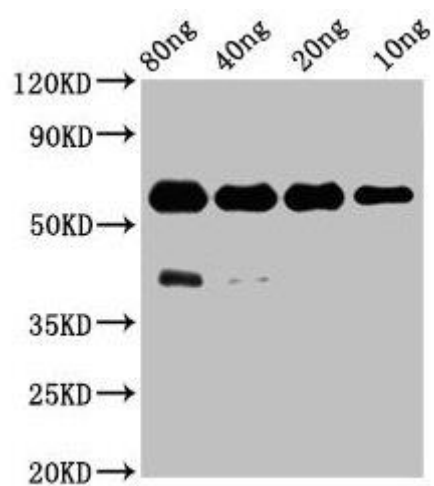
Recombinant Zebrafish Protein tyrosine phosphatase, receptor type, s, a protein (269-424AA).

**Storage:**

Preservative: 0.03% Proclin 300. Constituents: 50% Glycerol, 0.01M PBS, pH 7.4

## Product Images

---



Western Blot. Positive WB detected in Recombinant protein. All lanes: ptpsa antibody at 3.1 $\mu$ g/ml. Secondary. Goat polyclonal to rabbit IgG at 1/50000 dilution. Predicted band size: 48 kDa. Observed band size: 60 kDa.