

cyp1a Antibody

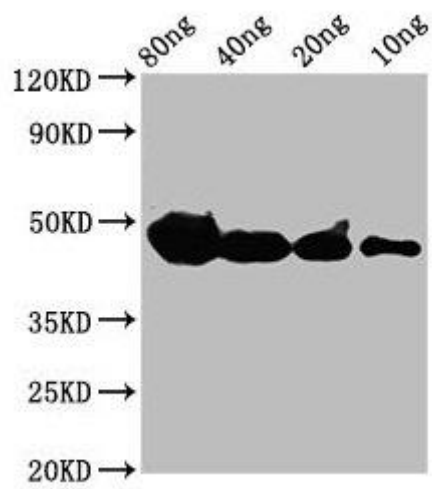


PACO61338

Product Information

| | |
|---------------------------------------|--|
| Size: | Protein Background: |
| 50ug | |
| Reactivity: | Gene ID: |
| Zebrafish | cyp1a |
| Source: | Uniprot |
| Rabbit | O93324 |
| Isotype: | Synonyms: |
| IgG | Cytochrome P450 1A1, cyp1a |
| Applications: | Immunogen: |
| ELISA, WB | Recombinant Zebrafish Cytochrome P450 1A1 protein (1-75AA). |
| Recommended dilutions: | Storage: |
| ELISA:1:2000-1:10000, WB:1:500-1:5000 | Preservative: 0.03% Proclin 300. Constituents: 50% Glycerol, 0.01M PBS, pH 7.4 |

Product Images



Western Blot. Positive WB detected in Recombinant protein. All lanes: cyp1a antibody at 4 μ g/ml. Secondary. Goat polyclonal to rabbit IgG at 1/50000 dilution. Predicted band size: 39 kDa. Observed band size: 47 kDa.