

PACO61326

Product Information

Size:

50ug

Reactivity:

Zebrafish

Source:

Rabbit

Isotype:

IgG

Applications:

ELISA, WB

Recommended dilutions:

ELISA:1:2000-1:10000, WB:1:500-1:5000

Protein Background:

Gene ID:

brca2

Uniprot

F1R8E8

Synonyms:

Breast cancer 2, early onset, brca2

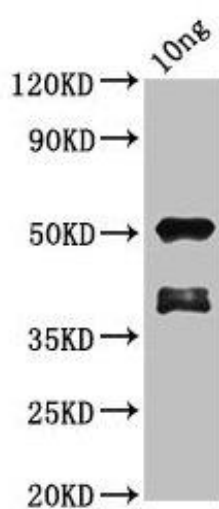
Immunogen:

Recombinant Zebrafish Breast cancer 2, early onset protein (2737-2874AA).

Storage:

Preservative: 0.03% Proclin 300. Constituents: 50% Glycerol, 0.01M PBS, pH 7.4

Product Images



Western Blot. Positive WB detected in Recombinant protein. All lanes: brca2 antibody at 1.7 μ g/ml. Secondary. Goat polyclonal to rabbit IgG at 1/50000 dilution. Predicted band size: 45 kDa. Observed band size: 52 kDa.