

Product Information

Size:

50ug

Reactivity:

Human

Source:

Rabbit

Isotype:

IgG

Applications:

ELISA, IF

Recommended dilutions:

ELISA:1:2000-1:10000, IF:1:50-1:200

Protein Background:

Visual signal transduction is mediated by a G-protein coupled cascade using cGMP as second messenger. This protein can be activated by cyclic GMP which leads to an opening of the cation channel and thereby causing a depolarization of rod photoreceptors.

Gene ID:

CNGA1

Uniprot

P29973

Synonyms:

cGMP-gated cation channel alpha-1, Cyclic nucleotide-gated cation channel 1, Cyclic nucleotide-gated channel alpha-1, CNG channel alpha-1, CNG-1, CNG1, Cyclic nucleotide-gated channel, photoreceptor, Rod photoreceptor cGMP-gated channel subunit alpha, CNGA1, CNCG, CNCG1

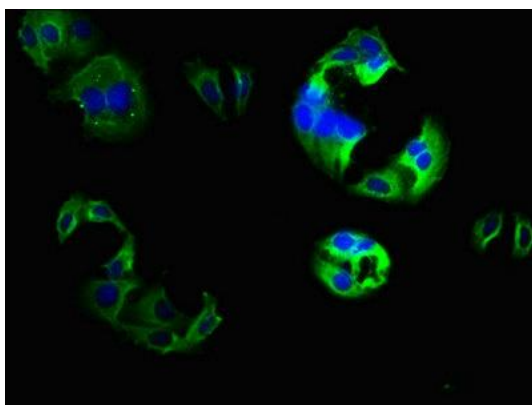
Immunogen:

Recombinant Human cGMP-gated cation channel alpha-1 protein (586-690AA).

Storage:

Preservative: 0.03% Proclin 300. Constituents: 50% Glycerol, 0.01M PBS, pH 7.4

Product Images



Immunofluorescence staining of HepG2 cells with PACO61298 at 1:133, counter-stained with DAPI. The cells were fixed in 4% formaldehyde, permeabilized using 0.2% Triton X-100 and blocked in 10% normal Goat Serum. The cells were then incubated with the antibody overnight at 4°C. The secondary antibody was Alexa Fluor 488-conjugated AffiniPure Goat Anti-Rabbit IgG(H+L).